

FS-C5015N/FS-C5025N/FS-C5030N

► print ► copy ► scan ► fax

A4 COLOUR PRINTERS

# COLOUR PRINTERS THAT PAY THEIR OWN WAY



*Ecosys*

 **KYOCERA**

# THE BENEFITS OF COLOUR, WITH THE ADVANTAGES OF COST-EFFICIENCY.

## RAISING YOUR PROFILE WHILE ENHANCING YOUR BALANCE SHEET



In business, creating an impression is not just useful, it's essential. A fundamental way in which this can be achieved is through the use of colour. The advantages of colour documents are there for all to see: more impact, more professionalism, more immediacy. Colour enhances brand perception, grabs a target market's attention and allows you to communicate your company's values much more effectively.

At the same time, cost control is equally high on the business agenda. After all, it's no good raising your profile if by doing so your costs escalate unacceptably.

Providing the answer to the colour versus cost balance are the FS-C5015N, FS-C5025N and FS-C5030N A4 colour printers. Bringing you all the benefits of colour printing, they simultaneously deliver optimum cost-efficiency.



Usually, colour printing means accepting inevitable expense, but not with the FS-C5015N/FS-C5025N/FS-C5030N. These new colour devices from Kyocera are incredibly economical and hard working, meaning very quickly you will be seeing a significant return on your investment. Quality printing goes hand in hand with ECOSYS technology – the sort that’s proved its worth time and time again in Kyocera monochrome devices. The result is very competitive cost-per-page figures. So, instead of being constrained by expense, your business can add to the possibilities of what it can achieve.

### Long-life components

Hard-wearing components increase longevity and reduce downtime.

### Attractive cost-per-page figures

Ensures an economical return on your investment.



### Easy access to consumables

Allows straightforward toner replacement and saves valuable time.

### PDF direct printing

Lets you print PDFs without having to open them first.

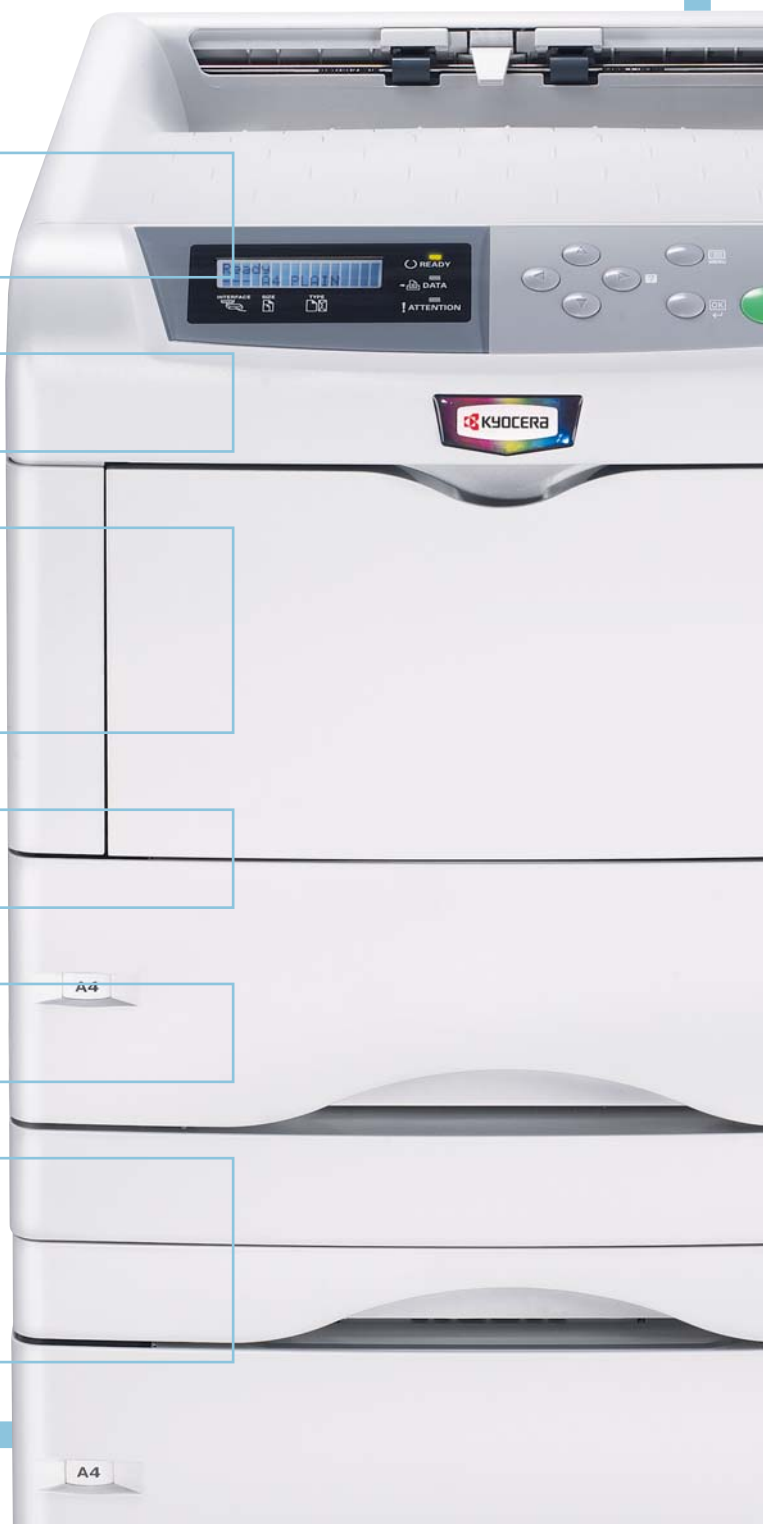
### Large standard paper capacity

Allows many print runs without having to refill with paper.



### Compact design with small footprints

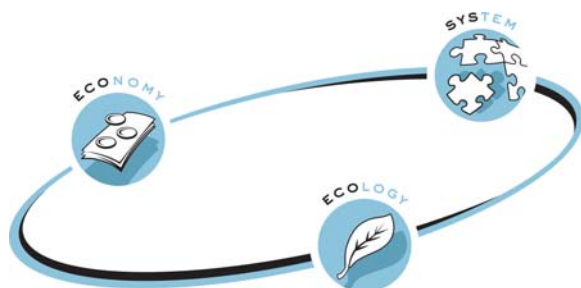
Means the printers take up minimal space, especially important in small and busy offices.





## A LONG-TERM COMMITMENT

ECOSYS is a unique guiding principle deployed by Kyocera Mita. The combination of optimised workplace efficiency, minimised environmental impact and effortless system integration truly sets Kyocera devices apart.



**ECONOMY:** Total Cost of Ownership (TCO) is the true lifetime cost of a device as operating expenses can significantly exceed the original purchase price. ECOSYS devices are designed to minimise both direct costs, such as consumables, and indirect costs, such as energy usage and administration, invariably offering the lowest TCO in their class.



**ECOLOGY:** Kyocera's long-life technology utilises our extensive expertise in ceramics. The durable drum is integral to the printer; the only consumable is the toner cassette. ECOSYS printers consume fewer materials in manufacture, generate less waste and simplify recycling, thereby minimising environmental impact.



**SYSTEM:** With Kyocera ECOSYS devices, there is a wide range of enhancements designed to maximise document output productivity. Additional functionality and upgrades are available, maximising the long-term benefit of the investment. Finally, Kyocera Mita's integrated system software ensures long-term and cross-network compatibility.

## ATTRACTIVE COST-PER-PAGE FIGURES, AT SPEED

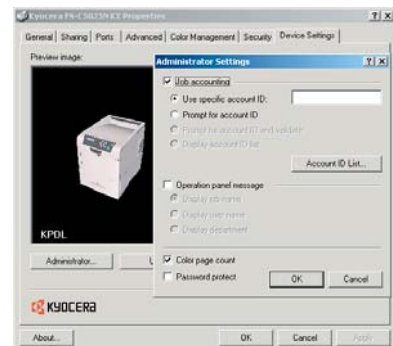
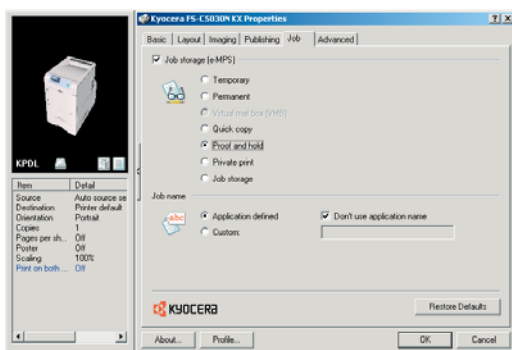
Two factors combine to keep the cost per printed page down with the FS-C5015N, FS-C5025N and FS-C5030N. An extremely durable drum, developer and fuser unit means no interruptions for servicing, while high capacity toner boxes reduce the need for frequent toner replacement.

Document output is fast, as is first page out time. Furthermore, USB 2.0 (Hi-Speed) and rapid network connectivity provide optimum compatibility and efficiency, while the printers' compact design and small footprint means they take up little space in a busy office – always an advantage in a modern, streamlined business.

## EXTEND THE POSSIBILITIES, AND THE COST-EFFICIENCY

In addition to attractive cost-per-page figures, the following functions contribute to the FS-C5015N, FS-C5025N and FS-C5030N's ability to make colour printing both affordable and controllable.

The departmental code function enables offices to monitor and control printer access for easy limitation of print volumes. Up to 100 codes can be set up. A dedicated colour use setting even permits allocating colour print quotas – providing users access to the full printer functions while keeping expenses under control.



A proof and hold function lets you print a first runout and check it before proceeding with a job. Particularly suited to longer print runs, it allows for corrections to be made and lets you avoid unnecessary waste – of paper, toner and time.

A duplex unit lets you print eye-catching in-house brochures. As it does so, it provides an additional cost-saving, since double-sided printing equals more economical use of paper.

## A COLOUR PRINTER TO SUIT THE WAY YOU WORK



Suitable for individuals looking for a stand-alone desktop colour printer, the FS-C5015N is also the ideal choice for small workgroups as it offers network connectivity as standard. It comes equipped with USB 2.0 (Hi-Speed) and 128 MB standard RAM, upgradeable to 640 MB. Its output speed is 16 pages per minute. A 500-sheet paper cassette combined with a multi-purpose tray provides a standard 600-sheet capacity. This can be upgraded to 1,100 sheets with the addition of an optional paper cassette for workgroups.

The FS-C5025N is ideally suited for use as a shared workgroup printer. It has USB 2.0 (Hi-Speed) and network connectivity as standard, for optimum compatibility. Printing at 20 pages per minute, its 128 MB standard RAM can be upgraded to 640 MB. Its standard 600-sheet capacity, achieved by means of a 500-sheet capacity paper cassette in conjunction with a 100-sheet multi-purpose tray, can be increased to a maximum 2,100 sheets.





The FS-C5030N is a high speed colour printer capable of supporting large departments. It features USB 2.0 (Hi-Speed) and network connectivity as standard as well as 128 MB standard RAM, upgradeable to 1,024 MB. Printing at 24 pages per minute, it comes equipped with a 500-sheet capacity paper cassette with 100-sheet multi-purpose tray. With the addition of three optional paper cassettes, a maximum capacity of 2,100 sheets enables long print runs to be carried out with ease. A number of options can be added to improve document handling further still. These include features such as departmental code and proof and hold functions, PDF direct printing, and a duplex unit for double-sided printing.

## TAKING YOU FURTHER

With broad international experience in printing, scanning, copying, faxing and document management, Kyocera is in a unique position to offer custom solutions that streamline the entire workflow process and maximise your return on investment from your office equipment. To achieve this, Kyocera employs its own software developers and partners with leading providers in the fields of accounting, security, document management and system management. To see how Kyocera solutions can multiply the productivity of your hardware visit [www.kyoware.com](http://www.kyoware.com)

# FS-C5015N/FS-C5025N/FS-C5030N

## A4 COLOUR PRINTERS



ECOSYS devices are designed to minimise both direct costs and indirect costs such as maintenance, administration and consumables. The cartridge-free system requires only the toner to be replaced. The modular design concept allows you to add workflow enhancing functions and a wide variety of paper handling capabilities as required. Integrated system software provides long-term cross-network compatibility. Kyocera's long-life components cost you and the environment less.

### GENERAL

**Technology:** Kyocera Colour ECOSYS  
**Engine speed:** FS-C5015N: Max. 16 pages per minute b/w and full colour  
Up to 16 images per minute in duplex mode (optional)  
FS-C5025N: Max. 20 pages per minute b/w and full colour  
Up to 20 images per minute in duplex mode (optional)  
FS-C5030N: Max. 24 pages per minute b/w and full colour  
Up to 24 images per minute in duplex mode (optional)  
**Resolution:** 600 x 600 dpi  
Multi-bit technology for optimum colour output  
**Time to first page:** FS-C5015N: 16 seconds or less  
FS-C5025N: 13 seconds or less  
FS-C5030N: 12 seconds or less  
**Warm-up time:** FS-C5015N/FS-C5030N: 80 seconds or less from power on  
FS-C5025N: 68 seconds or less from power on  
**Duty cycle:** FS-C5015N: Max. 50,000 pages per month (A4), max. average 2,500 per month  
FS-C5025N: Max. 85,000 pages per month (A4), max. average 10,000 per month  
FS-C5030N: Max. 85,000 pages per month (A4), max. average 15,000 per month  
**Power source:** AC 220 ~ 240 V, 50/60 Hz  
**Power consumption:** FS-C5015N: Printing: 452 W, Stand-by: 173 W, Power-Saving (ECOpower): 16 W  
FS-C5025N: Printing: 443 W, Stand-by: 117 W, Power-Saving (ECOpower): 19 W  
FS-C5030N: Printing: 551 W, Stand-by: 180 W, Power-Saving (ECOpower): 21 W  
**Noise (ISO 7779):** FS-C5015N/FS-C5025N: Printing: 52 dB(A), Stand-by: 36 dB(A), Power-Saving (ECOpower): Immeasurably Low  
FS-C5030N: Printing: 55 dB(A), Stand-by: 36 dB(A), Power-Saving (ECOpower): Immeasurably Low  
**Dimensions (W x D x H):** 345 x 470 x 385 mm  
**Weight:** FS-C5015N: Approx. 24 kg with toner containers  
FS-C5025N/FS-C5030N: Approx. 25 kg with toner containers  
**Certification:** TÜV/GS, CE  
This product is manufactured according to ISO 9001 quality standard and ISO 14001 environmental standard.

### PAPER HANDLING

All paper capacities quoted are based on a paper thickness of max. 0.11 mm. Please use paper recommended by Kyocera under normal environmental conditions.

**Input capacity:** 500-sheet universal cassette, 60-105 g/m<sup>2</sup>, A4, B5, A5, Letter, Custom (148 x 210 – 216 x 356 mm), 100-sheet multi-purpose tray, 60-200 g/m<sup>2</sup>, A4, B5, A5, Letter, Legal, Custom (70 x 148 – 216 x 297 mm), FS-C5015N: max. 1,100 sheets, FS-C5025N/FS-C5030N: max. 2,100 sheets  
**Output capacity:** 250-sheet face-down with paper full sensor, face-up output with optional PT-300/PT-301

Your Kyocera Business Partner:

### System platform:

The FS-C5015N, FS-C5025N and FS-C5030N offer USB, parallel (FS-C5030N only) and network connectivity as standard and deliver problem-free system administration. Kyocera's single platform technology means that the same driver can be used for every Kyocera PCL/ PostScript print device on the network: from single-user desktop printers to high end multifunctional systems. Only Kyocera offers this effortless combination of IT sophistication and high performance paper handling expertise.

### PRESCRIBE IIc:

With the Kyocera page design and control language PRESCRIBE IIc, even complex colour graphics, logos and forms (even multipart forms) can be created independently of the system and saved and updated in the printer. Consequently, integration into print files no longer applies. They are only accessed as required and therefore relieve the load on the network.

### KM-NET for Client/KM-NET Viewer:

The settings of all printers on the network can be checked visually and amended from any Windows PC. KM-NET for Client enables easy setup and check of the printer status via USB, parallel (FS-C5030N only) and network connection. KM-Net Viewer is an advanced printer management software tool using the standardized protocol SNMP.

### CONTROLLER

**Processor:** FS-C5015N: PowerPC 750Cxr / 400 MHz  
FS-C5025N: PowerPC 750Cxr / 500 MHz  
FS-C5030N: PowerPC 750FX / 600 MHz  
**Memory:** FS-C5015N/FS-C5025N: 128 MB RAM + ECOMemory, max. 640 MB in 1 DIMM slot  
FS-C5030N: 128 MB RAM + ECOMemory, max. 1,024 MB in 2 DIMM slots  
**Emulations:** PCL6 (PCL5c/PCL-XL), KPDL 3 (PostScript 3 compatible) with automatic emulation sensing (AES), PDF direct print  
**Controller language:** PRESCRIBE IIc  
**Fonts:** FS-C5015N: 80 outline fonts (PCL6: PCL5c/PCL-XL, KPDL 3); 1 bitmap font;  
FS-C5025N/FS-C5030N: 80 outline fonts (PCL 6: PCL 5c/PCL-XL), 136 outline fonts (KPDL 3); 1 bitmap font;  
45 types of one-dimensional barcodes, plus 1 type of two-dimensional barcode (PDF-417).  
Downloadable fonts: Kyocera, PCL + TrueType format, Type 1 + 3 font format  
**Print features:** eMPS – for quick copy, proof and hold, private print, job storage and job management functionality with hard disk

### INTERFACE

**Standard interface:** FS-C5015N/FS-C5025N: USB 2.0 (Hi-Speed), Fast Ethernet 10/100Base-TX, KUIO-LV option interface slot  
FS-C5030N: High speed bi-directional parallel (IEEE 1284), USB 2.0 (Hi-Speed), Fast Ethernet 10/100Base-TX, KUIO-LV option interface slot  
**Multiple interface connection (MIC):** Allows simultaneous data transfer via up to three/four interfaces, with each interface having its own virtual printer.

### CONSUMABLES

FS-C5015N:  
**Toner-kit TK-520K:** Microfine toner black for 6,000 pages with 5% A4 coverage (ISO 10561B).  
**Toner-kit TK-520C:** Microfine toner cyan for 4,000 pages with 5% A4 coverage (ISO 10561B).  
**Toner-kit TK-520M:** Microfine toner magenta for 4,000 pages with 5% A4 coverage (ISO 10561B).  
**Toner-kit TK-520Y:** Microfine toner yellow for 4,000 pages with 5% A4 coverage (ISO 10561B).  
Capacity of starter toner is black 3,000 pages, cyan, magenta, yellow 2,000 pages with 5% coverage (ISO 10561B).  
FS-C5025N/FS-C5030N:  
**Toner-kit TK-510K:** Microfine toner black for 8,000 pages with 5% A4 coverage (ISO 10561B).  
**Toner-kit TK-510C:** Microfine toner cyan for 8,000 pages with 5% A4 coverage (ISO 10561B).  
**Toner-kit TK-510M:** Microfine toner magenta for 8,000 pages with 5% A4 coverage (ISO 10561B).

**Toner-kit TK-510Y:** Microfine toner yellow for 8,000 pages with 5% A4 coverage (ISO 10561B).  
Capacity of starter toner is 4,000 pages with 5% coverage (ISO 10561B).

### OPTIONS

**Paper handling**  
FS-C5015N/FS-C5025N/FS-C5030N:  
**PF-60 Paper feeder:** 500-sheet, 60-105 g/m<sup>2</sup>, A4, B5, A5, Letter, Legal, Custom (148 x 210 – 216 x 356 mm);  
FS-C5015N: Max. 1 x PF-60  
FS-C5025N/FS-C5030N: Max. 3 x PF-60  
**DU-301 Duplex unit:** Double-sided printing, 60-105 g/m<sup>2</sup>, A4, B5, A5, Letter, Legal, Custom (148 x 210 mm – 216 x 356 mm)  
**PT-300 Paper tray:** Face-up paper output tray for 100 sheets (FS-C5025N/FS-C5030N)  
**PT-301 Paper tray:** Face-up paper output tray for 100 sheets (FS-C5015N)  
**EF-310 Envelope feeder:** 70 standard envelopes / 100 air mail envelopes, A6-C5 (excludes FS-C5015N)

### Memory

**Printer memory:** FS-C5015N/FS-C5025N: 1 slot (64, 128, 256, 512 MB DIMM)  
FS-C5030N: 2 slots (64, 128, 256, 512 MB DIMM)  
**CompactFlash® card:** 1 slot (up to 2 GB) for printing forms, fonts, logos, macro storage  
**Hard disk HD-4/HD-5:** 20/40 GB HDD for easy document management

### Optional interface

FS-C5015N/FS-C5025N/FS-C5030N:  
**IB-23 Network card:** 10Base-T/100Base-TX  
**SB-70 Network card:** Wireless LAN – IEEE 802.11b  
**SB-110FX Network card:** 10Base-T/100Base-TX/100Base-FX, FibreOptic  
**SB-110 Network card:** 10Base-T/100Base-TX  
FS-C5030N:  
**IB-11 Serial interface:** RS-232C Serial Interface (up to 115.2kbps)

### WARRANTY

2-year warranty as standard for FS-C5015N and FS-C5025N.  
1-year warranty as standard for the FS-C5030D.  
Kyocera guarantees the drums and developers for 3 years or 200,000 pages\* (whichever occurs sooner), provided each printer is used and cleaned in accordance with the service instructions.  
\*FS-C5015N: 100,000 pages

**KYO LIFE** The up to 5-year on-site warranty\*\* extension for printer and options.

\*\*FS-C5015N: 3-year on-site warranty



pureprint®

Mixed Sources  
Product group from well-managed  
forests and other controlled sources  
www.fsc.org Cert no. SA-COC-1502  
© 1996 Forest Stewardship Council

CarbonNeutral® company

Kyocera Mita (UK) Ltd, 8 Beacontree Plaza, Gillette Way, READING RG2 0BS  
Tel: 0118 931 1500, Fax: 0118 931 1108, email: info@kyoceramita.co.uk,  
www.kyoceramita.co.uk

Kyocera does not warrant that any specifications mentioned will be error-free. Specifications are subject to change without notice. Information is correct at time of going to press. All other brand and product names may be registered trademarks or trademarks of their respective holders and are hereby acknowledged.

Printed by Beacon Press, a CarbonNeutral® company, using proprietary pureprint® environmental print technology.

