

**KM-6030 / KM-8030**

▶ print ▶ copy ▶ scan ▶ fax

# SHIFT INTO A HIGHER GEAR

with a high speed document manager



Products depicted include optional extras

 **KYOCERA**

# WHEN PRODUCTIVITY GETS A BOOST, PROFITS SOAR

Large departments with heavy workloads need to be able to shift into a higher gear to keep workflow running smoothly. The KM-6030 and KM-8030 are remarkably productive A3 monochrome multifunctionals that form the centrepiece of departmental workflow, offering complete control over both electronic and paper documents. When productivity increases, big becomes a bonus.

## THE HIGHER THE VOLUME, THE MORE COSTS MATTER

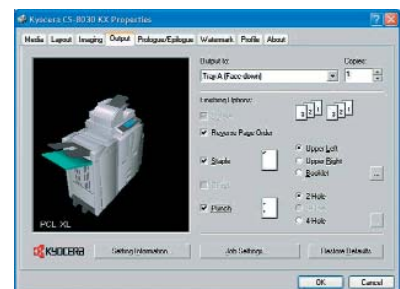
Kyocera's expertise in printing and copying technology means your multifunctional has proved itself before you turn it on. Continuous research and development has produced durable, long-life components that significantly reduce routine maintenance. Decreased maintenance equals increased productivity, vital for any high volume product in a busy office environment. Toner is the only consumable that needs to be routinely replaced.

## A MULTIFUNCTIONAL THAT SPECIALISES IN BEING FAST

Printing, copying and scanning from one device is an obvious sign of productivity. But performing all these functions fast enough to handle the work that is already on its way, is the kind of productivity you need in high volume environments. With printing speeds of up to 80 pages per minute, time saving digital copy functions and standard duplex scanning, this is a machine that has its priorities straight.

## CONNECT EVERYONE TO THE PROFIT CENTRE

Open the pipeline to profits with an easy to administer network. The **KM-NET Viewer** uses an intuitive interface that makes configuration, administration and maintenance of large networks an exercise in efficiency. With **multiple interface options**, you're prepared for volumes of work that come from any direction. The **universal KX Driver** works seamlessly in any Windows environment and accommodates additional platforms if your operating system changes. When productive individuals are connected, it pays.



The universal KX Driver

# KM-6030 / KM-8030



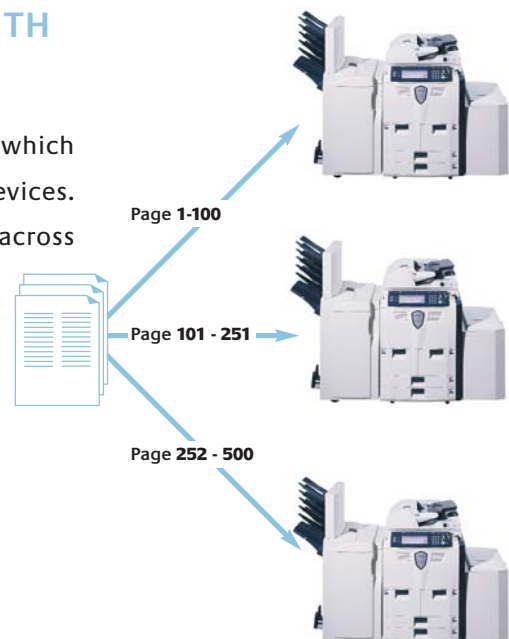
## INTELLIGENT DOCUMENT PRODUCTION WITH KX SPOOLCENTER SOFTWARE

**KX SpoolCenter** is a print sharing piece of software which comes bundled (and **free!**) with Kyocera network devices. This software enables large print volumes to be shared across multiple connected Kyocera printers and MFPs.

### Features

- ▶ Holds, schedules, and distributes Windows print jobs to selected network printers and MFPs based on user-defined printing policies
- ▶ Policies include tandem (multiple copies) and cluster\* (job dividing) printing
- ▶ Produces visual graphs displaying detailed print job accounting information

\* Extra printer memory will be required for cluster printing functionality



## IT'S TEMPTING TO SAFEGUARD YOUR KNOWLEDGE

The more connected everyone is, the more necessary it is to protect your hard work. With the addition of the Kyocera **data security kit**, your documents are automatically deleted from the device's hard disk memory once they have been printed, copied or scanned.

## A PRINTER THAT DOESN'T FADE

There's no point in getting there fast if standards slip toward the end. With printing up to **60/80 pages per minute on A4** and up to **31/41 pages per minute on A3**, you have the capacity to handle a challenging workload – without losing print quality. Kyocera multibit technology employs 256 levels of gradation, making text crisper and shading on charts and graphs finer. **PDF direct printing** helps facilitate review cycles by allowing this popular document exchange format to be printed without even opening the file.

## UNCOVER A WEALTH OF DIGITAL COPY FUNCTIONS

With large departments, anything that can make copying easier has an effect on the bottom line. The **job build feature**, for example, allows you to create a single cohesive document from individual sets. **Cover mode** automatically adds a front and back cover with coloured or thick paper. **Duplex mode** saves costs by making double-sided copies. **Layout mode** combines multiple pages on one page to give you a thumbnail view of your project. The **scan-once-print-many feature** scans up to 80 original documents per minute then makes multiple copies, keeping your entire department on the path to profitability.

Job build feature



Cover mode



Layout mode



## 80 SCANS IN ONE MINUTE FLAT

Scanning seems like a good idea, but isn't it a hassle? The simple answer – no. The **200-sheet document processor** coupled with a high speed scan rate allows single-sided scans at 80 pages per minute. This productivity enhancing design simultaneously **scans both sides of the paper in one pass**, enabling more convenient **double sided scanning**. In addition, the **scan-to-email** feature works in collaboration with bundled address software to send images to multiple email addresses simultaneously.

You can even use the **scan-to-PC** feature to send an electronic document directly to any PC in the network.



## MAKE LESS WORK FOR THE NETWORK

Traffic on the network tends to increase every day, while the infrastructure stays the same size. To avoid bottlenecks, the Kyocera **PRESCRIBE IIe** control language allows complex documents to be stored independently from the system then be updated in the printer as required. Kyocera's **enhanced Multiple Printing System (eMPS)** helps streamline workflow when you need it most by storing data electronically on the multifunctional itself.

### Quick Copy

Recently printed documents remain in the hard disk's memory. Everyone has access to them for quick reprints without delay.

### Virtual Mailbox

Add documents to your electronic pile with a personalised storage space on the hard disk that you can access individually.

### Job Storage

For commonly used documents such as holiday requests or other templates you fill in by hand, save it on the hard disk so you don't block the network.

### Private Print

You don't have to sacrifice privacy. Store confidential documents on the hard disk and access them by entering your personal password.

### Proof and Hold

Save time and toner with a quick test. It enables your first copy to be checked for errors before the entire job is printed.

## A TOUCH PANEL THAT ADJUSTS TO YOUR ANGLE OF VIEW

This user-friendly touch panel makes it simple to take advantage of integrated document management solutions by guiding you through

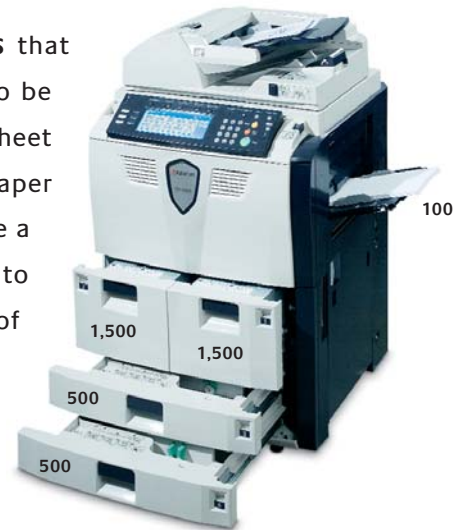
self-explanatory menu screens. To make it even easier, you can customise **one-touch keys and shortcut keys** to simplify frequently used or repetitive tasks. None of this is any good if you can't see what is happening. The **widescreen touch panel** is designed to be adjusted so it can be seen from a sitting or standing position or to avoid reflective light. Even fluorescent office lights are no match.



## HANDLE THE PAPER WEIGHT OF AN ENTIRE DEPARTMENT

The KM-6030 and KM-8030 are optimised for departments with heavy workloads, offering **standard paper capacity of 4,100 sheets** in a space saving design. Everyone in the department can get as much out of their projects as they put into them.

**Kyocera modular design gives you flexible options** that allow everything from simple reports to innovative new ideas to be shared in creative ways. Standard feeders include a 3,000-sheet (2x1,500) high capacity paper feeder, two 500-sheet universal paper feeders and a 100-sheet multipurpose tray. Together, they handle a wide range of paper weights and formats. With access to **multiple paper feeders**, you can choose from a variety of paper stocks: use lightweight paper for internal use and a heavier weight for clients, for example. No matter how heavy the workload is, you're prepared.



Newly designed releases allow you to open paper trays with one finger



PF-650

Is your department exceptionally productive? Incorporate an additional 4,000-sheet high-capacity paper feeder and you can handle **8,100 sheets** with ease.

### Flexible finishing solution

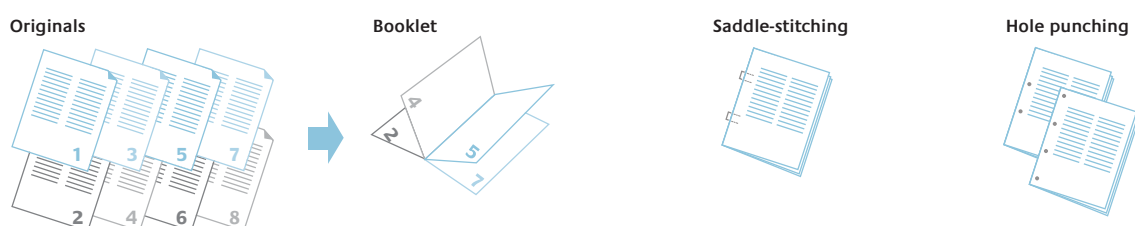
Where did the stapler go? It doesn't matter, the optional **3,000 sheet multi-staple finisher (DF-650)** will do the stapling. Where did my project go? The **optional multi-tray (MT-1A)** probably knows – it accepts finished sets (punched, stapled) from print or copy keeping the entire department's output from overlapping. A **mailbox** does the sorting, ensuring that the only fingerprints on your presentation will be yours.



DF-650 and MT-1(A)

## Professional finishing solution

There's something satisfying about folded booklets – as long as you aren't folding them yourself. For an efficient in-house solution, the **16-sheet booklet folder (BF-1A)** offers **automatic folding, centre binding and saddle-stitching**. To get your presentation off to the right start, heavy stock cover pages are handled with ease. The **hole punching system (PH-4C)** does its part to make paper archiving easier, allowing you to insert reports and invoices into ring binders with either two or four rings.



## KM-6030 / KM-8030

### FEATURE

### ADVANTAGE

### BENEFIT FOR YOU

60/80 pages per minute in A4  
31/41 pages per minute in A3

Faster output

Gives you more time for other tasks

Time to first copy:  
3.6 seconds or less (KM-6030)  
2.9 seconds or less (KM-8030)

Fast prints

Less waiting

600 dpi multi-bit technology

Finer gradations of shading

Crisper text and more realistic photos

4,100 sheets paper capacity as standard,  
max. 8,100 sheets; duplex as standard

Handle a range of different print  
formats in the same print run

Saves time and facilitates  
high volume output

Double-sided scanning in one pass

Enhances scanning productivity

Time and cost efficient

200-sheet document processor

Simplifies document input

Handle large workloads with ease

Optional document finishers for stapling  
and hole-punching

Create professional booklets and  
business presentations

Ready-made documents, no extra  
work for you

Optional network printing and scanning

Multifunctional capabilities for the  
entire group

Greater connectivity and enhanced  
productivity

# KM-6030 KM-8030

## Monochrome A3 Document Management System

The KM-6030 and KM-8030 incorporate extremely durable components that guarantee efficient and reliable operation. The system is designed to meet the demanding requirements of busy office environments. The KM-6030 and KM-8030 provide effective productivity and maximise uptime whilst ensuring a minimum impact on the environment.

### GENERAL

**Technology:** Kyocera Laser, Mono component  
**Engine speed:**  
KM-6030: Max. 60/31 pages per minute A4/A3  
KM-8030: Max. 80/41 pages per minute A4/A3  
**Resolution:** 1,200 dpi quality (1,800 x 600) (copy/print)  
600 x 600 dpi, 256 greyscaled (scan)  
**Time to first copy:**  
KM-6030: 3.6 seconds or less  
KM-8030: 2.9 seconds or less  
**Warm-up time:** 30 seconds or less  
**Power source:** AC 220 - 240 V, 50/60 Hz  
**Power consumption:** Printing: 1,371W (KM-6030), 1,503W (KM-8030) Stand-by: 395 W,  
Power-Saving (ECOpower): 236 W  
**Noise (ISO 7779):** Printing: 75 dB(A), Stand-by: 58 dB(A),  
Power-Saving (ECOpower): Immeasurably low  
**Dimensions (W x D x H):** 680 x 783 x 1,190 mm  
**Weight:** Main unit: Approx. 188 kg  
**Certifications:** TÜV/GS, CE  
This product is manufactured according to ISO 9001 quality standard and ISO 14001 environmental standard.

### PAPER HANDLING

All paper capacities quoted are based on a paper thickness of max. 0.11 mm. Please use paper recommended by Kyocera under normal environmental conditions.

**Input capacity:** 2 x 1,500-sheet high capacity paper feeder, 60-160 g/m<sup>2</sup>, A4, 2 x 500-sheet universal paper feeder, 60-160 g/m<sup>2</sup>, A3-A5R, Folio  
100-sheet multi-purpose tray, 45-200 g/m<sup>2</sup>, A3-A6R, Folio  
Max. input capacity with options: 8,100 sheets  
Duplex as standard  
**Output capacity:** 250 sheets

### COPY FUNCTIONS

**Max. original size:** A3  
**Continuous copying:** 1-9999  
**Memory capacity:** Standard 128 MB and 40 GB HDD  
**Zoom range:** 25-400% in 1% steps  
**Present magnification ratios:** 22R / 9E  
**Digital features:** Energy save mode, interrupt copy, scan once copy many, EcoPrint mode, electronic sort, rotate sort, rotate copy, N-up copy, split copy, cover mode, page numbering, image overlay, margin shift, border erase, positive/negative, mirror, proof mode, duplex, booklet copy, program (8), department code (1,000), job building, job reservation, image centring, repeat copy, form registration, shared data box, synergy print box

Your Kyocera Business Partner:

### System platform

The KM-6030 and KM-8030 deliver outstanding network connectivity and problem-free system administration. Kyocera's single platform technology means that the same driver can be used for every Kyocera PCL/PostScript print device in the network: from single-user desktop printers to high-end multifunctional systems. Only Kyocera offers this effortless combination of IT sophistication and high-performance paper handling expertise.

### PRESCRIBE IIe

With the Kyocera page design and control language PRESCRIBE IIe, complex graphics, logos and forms (even multipart forms) can be created independently of the system and saved and updated in the printer. Consequently, integration into print files no longer applies. They are only accessed as required and therefore relieve the load on the network.

### Typefaces and barcodes

The 136 scalable Post Script fonts provide high flexibility for all applications. A total of 45 integrated barcodes including hash totals are computed automatically by the printer and printed in the desired size, alignment and position.

### PRINT FUNCTIONS (OPTIONAL)

**Processor:** PowerPC 750FX / 600 MHz  
**Memory:** Standard 64 MB + ECOMemory, max. 576 MB (2 additional DIMM slots for 32, 64, 128, 256 MB),  
1 CompactFlash card slot  
**Emulations:** PCL6/PCL5e incl. P.J.L, KPDL 3 (PostScript 3 compatible) with automatic emulation sensing (AES), KC-GL (HP-7550A), Line Printer, IBM Proprinter X24E, Epson LQ-850, Diablo 630  
**Controller language:** PRESCRIBE IIe  
**Fonts:** 80 outline fonts (PCL6), 136 PostScript KPDL 3 fonts, 1 bitmap font, 45 types of one-dimensional barcodes plus two-dimensional barcode (PDF-417)  
Downloadable fonts: Kyocera, PCL + TrueType format, Type 1 + 3 format  
**Features:** eMPS – for quick copy, proof and hold, private print, job storage and job management functionality with hard disk

### INTERFACES

**Standard interface:** High speed bi-directional parallel (IEEE 1284), USB 2.0 (Hi-Speed), Fast Ethernet 10-Base-T/100Base-TX, 2 KUIO-LV option interface slots  
**Multiple interface connection (MIC):** Allows simultaneous data transfer via up to four interfaces, with each interface having its own virtual printer.

### SCAN FUNCTIONS (OPTIONAL)

**Functionality:** Scan-to-PC, scan-to-email, scan-to-FTP, network TWAIN  
**Scan speed:** 80 originals per minute (600 dpi/A4)  
**Scan resolution:** 600, 400, 300, 200 dpi  
**Max. scan size:** A3  
**Original recognition:** Text, photo, text + photo OCR  
**Interface:** 10Base-T/100Base-TX  
**Network protocol:** TCP/IP  
**File types:** TIFF, PDF  
**Compression format:** G4 (MMR)  
**Bundle software:** DB-Assistant, Scanner file utility, Address Book, Address editor, TWAIN source, PaperPort Delux  
**Applicable PC:** IBM AT/PC compatible, MAC  
**Applicable OS:** Windows 95, 98, ME, NT4.0, 2000, XP, MAC/OS9, MAC/OSX

### KM-NET Viewer

KM-NET Viewer is an advanced network management software tool that is compatible with all Kyocera printers and multifunctional products as well as these of other vendors that use the standardized protocol SNMP. The settings of all printers on the network can be checked visually and amended from any Windows PC. KM-NET Viewer also acts as a valuable, real-time early warning system by sending eMail messages.

### CompactFlash® card

The CompactFlash® card offers abundant storage space for typefaces, logos, standard forms and signatures as well as individual API or PRESCRIBE macros.

### Hard disk

The optional hard disk offers even more efficient document management. At the same time it allows the management of print data with eMPS functions such as quick copy, proof and hold, private print and job storage.

### OPTIONS

#### Printing system (V), Scan system (G)

#### Paper handling

**PF-650 High capacity paper feeder:** 4,000 sheets, 60-160 g/m<sup>2</sup>, A4  
**PF-660 High capacity paper feeder:** 4,000 sheets, 60-160 g/m<sup>2</sup>, A3  
**DF-650 Document finisher:** 3,000-sheet main tray, 200-sheets sub tray, 45-200 g/m<sup>2</sup>, staple 50-sheet, 4 modes incl. booklet stapling  
**MT-1(A) Multi-tray:** 5-bins, 150/100 sheets (A4/A3) each bin (optional DF-650)  
**BF-1(A) Booklet folder:** 16 sheets, 60-200 g/m<sup>2</sup> for cover sheet (optional for DF-650)  
**PH-4C Punch hole unit:** 2/4-hole (optional for DF-650)

#### Memory for printing system (V)

**DIMM memory:** 2 slots for 32, 64, 128, 256 MB (max. 576 MB)  
**CompactFlash® card:** 1 slot (8, 16, 32, 64 MB), forms, fonts, logos, macro storage, PCL Barcode Flash  
**HD-10 Hard Disk:** 20GB, storage of data, forms, fonts and eMPS

#### Security

#### Data security kit B

#### Optional interface

**IB-21E Network card:** 10Base-T/100Base-TX  
**SB-50 Network card:** 10Base-FL, FibreLink  
**SB-60 Network card:** TokenRing STP/UTP  
**SB-70 Network card:** Wireless LAN – IEEE 802.11b  
**SB-110FX Network card:** 10Base-T/100Base-TX/100Base-FX, FibreOptic  
**IB-11 Serial interface:** RS-232C serial interface (max. 115.2 kbps)

### CONSUMABLES

**TK-655 Toner-kit:** Microfine toner for 47,000 pages with 6% coverage (ISO 10561B)



pureprint®



CarbonNeutral® company

Printed by Beacon Press, a CarbonNeutral® company, using proprietary pureprint® environmental print technology.

Kyocera Mita (UK) Ltd, 8 Beacontree Plaza, Gillette Way, READING RG2 0BS  
Tel 0118 931 1500 Fax 0118 931 1108, email: info@kyoceramita.co.uk www.kyoceramita.co.uk

Kyocera does not warrant that any specifications mentioned will be error-free. Specifications are subject to change without notice. Information is correct at time of going to press. All other brand and product names may be registered trademarks or trademarks of their respective holders and are hereby acknowledged.

KYOCERA