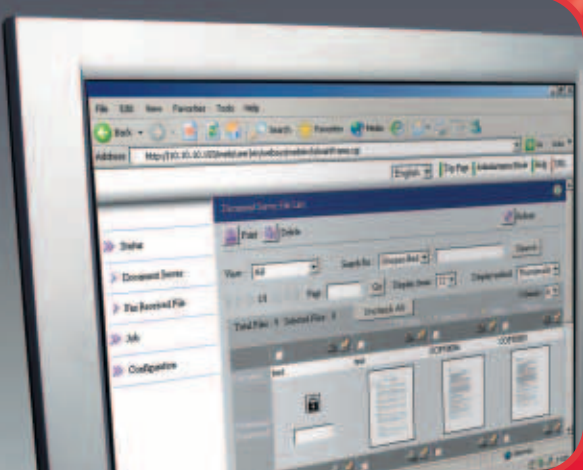


# nashuatec

TOTAL DOCUMENT SOLUTIONS



## MP 3500/MP 4500



THE KEY TO SECURE  
OFFICE DOCUMENT PRODUCTION

Aficio™

## Secure and productive high-quality output for the office environment



Everyday document security is becoming increasingly important. Preserving the confidentiality of your business information and effectively managing your document workflow is vital in the modern office.

The MP 3500 and MP 4500 from Nashuatec address document security directly with advanced security features including Windows Authentication, for controlled access, and enhanced printing solutions.

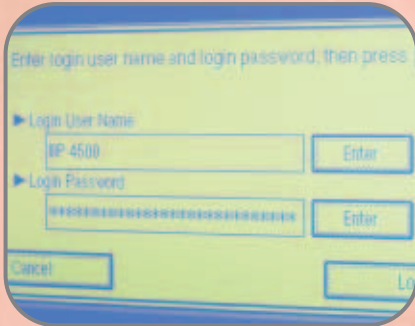
To boost productivity, the MP 3500 and MP 4500 combine fast network print, copy, scan and fax functionality with advanced scanning technologies and versatile finishing options for the production of professional-looking documents.

Exceed your expectations with Nashuatec's MP 3500 and MP 4500, the secure and productive choice for the busy office.



*Nashuatec's unique approach, links people with knowledge and expertise, combining our wide experience of innovative, document related Products and Software Solutions with our world class Business and Professional Services to deliver the best Total Document Solutions for your business.*

Restrict access with the  
Windows Authentication feature



Communicate and share your documents effectively with time and cost efficient document distribution



#### **Increase your document productivity**

Manage your office document workflow efficiently with Nashuatec's MP 3500 and MP 4500, which deliver print and copy at fast speeds of 35 and 45 pages per minute (ppm) plus scan and fax functionality. Both models provide true 600dpi quality and double-sided output on paper sizes up to A3, allowing you to meet all your business needs.

#### **Powerful high-level security**

The MP 3500 and MP 4500 are highly intelligent when it comes to document security. Windows Authentication links access to the device via each user's Windows log-in, preventing unauthorized use and enabling every print job to be tracked by the Network Administrator. Conveniently, this means users only need to remember one password. Additional security is available with the device's encryption feature, which scrambles certain data, including passwords and the address book, safeguarding against interception and falsification of information. Security for your documents is further increased with the Document Overwrite Security (DOS) feature, which overwrites temporary data on the device's hard disk.

#### **Work intelligently with enhanced printing features**

Maximize productivity with enhanced printing features on the MP 3500 and MP 4500. Acting as a virtual mailbox, Hold Print enables users to print multiple print jobs at a single and convenient time. Confidential documents are secured with Locked Print, which holds printing of a document until the user inserts the document's password at the device's control panel. With Sample Print users can print one copy of a document as a sample for proof reading before the remaining copies are printed. Finally, with Stored Print, frequently used documents can be reproduced quickly and easily direct from the control panel. This saves a document and all associated print settings in the device's hard disk. All these intelligent printing features are accessed via the straightforward RPCS printer driver.

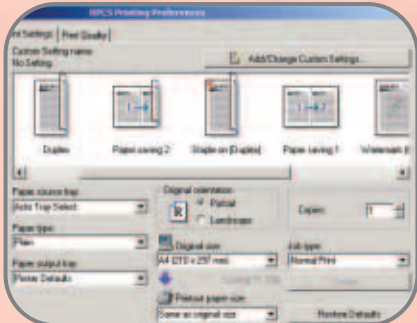
#### **Advanced document communication features**

The intelligent scanning technologies on the MP 3500 and MP 4500 are designed to help you share files efficiently and easily. Simply scan your documents to any network folder for easy distribution and convenience with Scan-to-Folder. Use Scan-to-Email to send the scanned documents to any email address, direct from the easy-to-use control panel. Additionally, avoid sending large documents over your network with Scan-to-URL, which stores scanned documents on the device's hard disk. A URL address is distributed by email, enabling the document to be retrieved via a web browser interface.

#### **Convenient fax capabilities**

Work more effectively with the productive and easy-to-use fax option on the MP 3500 and MP 4500. Send faxes directly from your PC with paperless fax, saving time and paper. For additional convenience, received faxes can be sent directly to a designated email address or network folder.

Intuitive, easy-to-use RPCS print driver allows you to print documents in your preferred format



Access and automatically update your company's email address book with LDAP



Print, copy, scan and fax from one productive device



#### Easy administration

Management of these devices is easier for Network Administrators, with automatic email notification and LDAP (Lightweight Directory Access Protocol). Even when off-site, you can access information regarding paper and toner levels; and network settings, via email. With LDAP, an automatically updated company address book is stored on the device, saving both the user and Network Administrator time inputting details.

#### Advanced connectivity for the modern office

With seamless integration to all leading network environments, the MP 3500 and MP 4500 provide users with the flexibility to work effectively. Furthermore, users can 'hot desk' anytime, anyplace with the Wireless LAN (IEEE802.11b) connectivity option.

#### Web Image Monitor

Web Image Monitor comes pre-installed on these devices and is accessed through a standard web browser interface. As a result, Network Administrators save valuable time by managing the MP 3500 and MP 4500 directly from their PC, from setting user names to configuring each function. At the same time, users can view, download and re-print documents stored within the document server, or simply check the status of paper trays or toner levels in the device, increasing efficiency and productivity.

#### Web SmartDeviceMonitor 2

Web SmartDeviceMonitor 2 software gives Network Administrators central control of your connected document devices through a web-browser interface. Easily downloaded and installed, it allows you to manage these devices remotely from any desktop, including automatic configuration to your specifications and group and user profiling. Furthermore, Web SmartDeviceMonitor 2 constantly monitors your document devices to provide proactive communication of their status. By quickly emailing alerts to users, devices are on-line in no time maximizing productivity.

#### Environmental benefits

Nashuatec is committed to sustaining the environment and the considerate use of paper. Achieve energy efficiency through the design of the MP 3500 and MP 4500, which incorporates low power consumption, fast warm-up times and an energy saver mode. Unnecessary paper usage in the office is reduced with double-sided output and advanced scanning functionalities such as Scan-to-URL and Scan-to-Folder.

#### Outstanding Software and Services

Improving productivity, workflow efficiency and cost control is easy with Nashuatec. Designed to add value and ensure our devices operate seamlessly and reliably, we cover every aspect of your business from document management, network control and consultancy, to training and unrivalled support. For connected devices the intelligent way of working is @Remote. This embedded technology uses the Internet to automate administration of the MP 3500 and MP 4500, sending meter readings, service call and consumable notifications directly to Nashuatec via a secure connection.

**Aficio™**

*The Nashuatec MP 3500 and MP 4500 bear the Aficio Symbol – your sign of digital technology, innovation and customer support in action.*



**Complete the job with professional finishing**

Professional-looking documents are within reach with the MP 3500 and MP 4500. Both models provide you with the means to be more productive with a range of outstanding document finishing options

including Hole Punch, Stapling and Booklet Making. You can now create documents with a visual impact that will be noticed by clients and colleagues alike.

# SPECIFICATIONS

# MP 3500/MP 4500

## Printer (Option)

### Print speed

35/45 prints per minute

### Printer language

Standard: PCL5e, PCL6, RPCS  
Option: Adobe PostScript 3

### Resolution

Maximum: 600 x 600dpi

### Interface

Standard: USB 2.0, Ethernet 10 base-T/  
100 base-TX  
Option: Bi-directional IEEE 1284,  
Wireless LAN (IEEE 802.11b),  
Bluetooth

### Memory

384MB + 40GB Hard disk drive

### Network protocol

TCP/IP, IPX/SPX, SMB, AppleTalk

### Supported environments

Windows 95/98/Me/NT4.0/2000/XP/  
Server 2003  
Novell NetWare 3.12/3.2/4.1/4.11/5.0/  
5.1/6/6.5  
UNIX Sun Solaris 2.6/7/8/9/10  
HP-UX 10.x/11.x/11iv2  
SCO OpenServer 5.0.6/5.0.7  
RedHat Linux 6.x/7.x/8.x/9.x/Enterprise  
IBM AIX v4.3/5L v5.1/5L v5.2/5.3  
Macintosh 8.6 or later (OS X Classic)  
Macintosh X v10.1 or later (native mode)  
SAP R/3 (3.x or later)  
NDPS Gateway Network 5.1 (SP8 or later)/  
6.0 (SP5 or later)/6.5 (SP3 or later)  
IBM iSeries /AS/400 using OS/400 Host Print  
Transform

## Copier

### Copying process

Twin laser beam scanning & electro-  
photographic printing

### Copy speed

35/45 copies per minute

### Resolution

600dpi

### Multiple copy

Up to 999

### Warm up time

15/20 seconds

### First output speed

4.3/3.6 seconds

### Zoom

25 - 400% (in 1% steps)

### Memory

Standard: 128MB + 40GB Hard disk drive  
Maximum: 384MB + 40GB Hard disk drive

### Paper input capacity

Standard: 2 x 500-sheet paper trays  
1 x 50-sheet bypass tray  
Maximum: 3,550 sheets

### Paper output capacity

Standard: 500 sheets  
Maximum: 2,875 sheets

### Paper size

A6 - A3

### Paper weight

Paper tray 1/2/duplex tray: 64 - 105 g/m<sup>2</sup>  
Paper tray 3/4: 60 - 105 g/m<sup>2</sup>  
Bypass tray: 52 - 163 g/m<sup>2</sup>

### Dimensions (W x D x H)

670 x 650 x 720mm

### Weight

Less than 79kg

### Power source

220 - 240V, 50/60Hz

### Power consumption

Operation: Maximum 1.37kW  
Energy saver mode: Less than 130W

## Scanner (Option)

### Scan speed

Maximum: 52 originals per minute  
(MH, A4/LEF)

### Resolution

Maximum: 600dpi (TWIN 1,200dpi)

### Original size

A5 - A3

### Bundled drivers

Network TWIN

### Scan to e-mail

SMTP, TCP/IP

### Destination addresses

Maximum 500 per job

### Stored destination addresses

Maximum 2,000

### Address book

Via LDAP or locally on Hard disk drive

### Scan to folder

SMB, FTP, NCP protocol (with login security)

### Destination

Maximum 50 folders per job

## Fax (Option)

### Circuit

PSTN, PBX

### Compatibility

ITU-T (CCITT) G3  
ITU-T (T.37) Internet Fax  
ITU-T (T.38) IP Fax

### Modem speed

Maximum: 33.6kbps

### Resolution

Standard/detail: 200 x 100/200dpi  
Superfine: 400 x 400dpi (option)

### Compression method

MH, MR, MMR, JBIG

### Scanning speed

Less than 0.43 seconds  
(200 x 100/200dpi, A4/SEF)

### Memory

Standard: 12MB  
Maximum: 44MB

### Memory backup

Yes

## Software

SmartDeviceMonitor  
Web SmartDeviceMonitor 2  
Web Image Monitor  
DeskTopBinder Lite

## Other Options

- Platen cover
- 80-sheet Automatic Reverse Document Feeder
- 2 x 500-sheet paper trays
- 1,500-sheet large capacity tray
- 125-sheet one-bin tray
- 1,000-sheet finisher
- 2,500-sheet multi-tray finisher
- 1,150-sheet booklet finisher
- 2/4 hole punch unit
- 2nd Super G3 port
- Data Overwrite Security Unit
- Copy Data Security Unit
- File Format Converter
- User Account Enhance Unit
- Browser Unit
- Scanner upgrade (for printer option)
- Printer upgrade (for RPCS printer unit)
- VM Card (Java)
- Key Counter Bracket
- Scanner Accessibility Option
- Fax Marker
- Bridge Unit
- Professional Software Solutions

Company management systems applied during the manufacturing of all Nashuatec products conform to ISO9001 quality and ISO14001 environmental management standards.

In compliance with EU RoHS directive (RoHS: Restriction of Hazardous Substances).

We reserve the right to make amendments to the technical specifications and external appearance of this equipment. Please note that the full range of machines and options shown in this publication may not always be available. All brand and product names are recognised, and hereby acknowledged, as registered trademarks of their respective owners.



Adobe PostScript 3



Embedded Software Architecture



Adobe PDF



NNP450000680

# nashuatec

Part of the NRG group

www.nashuatec.com

